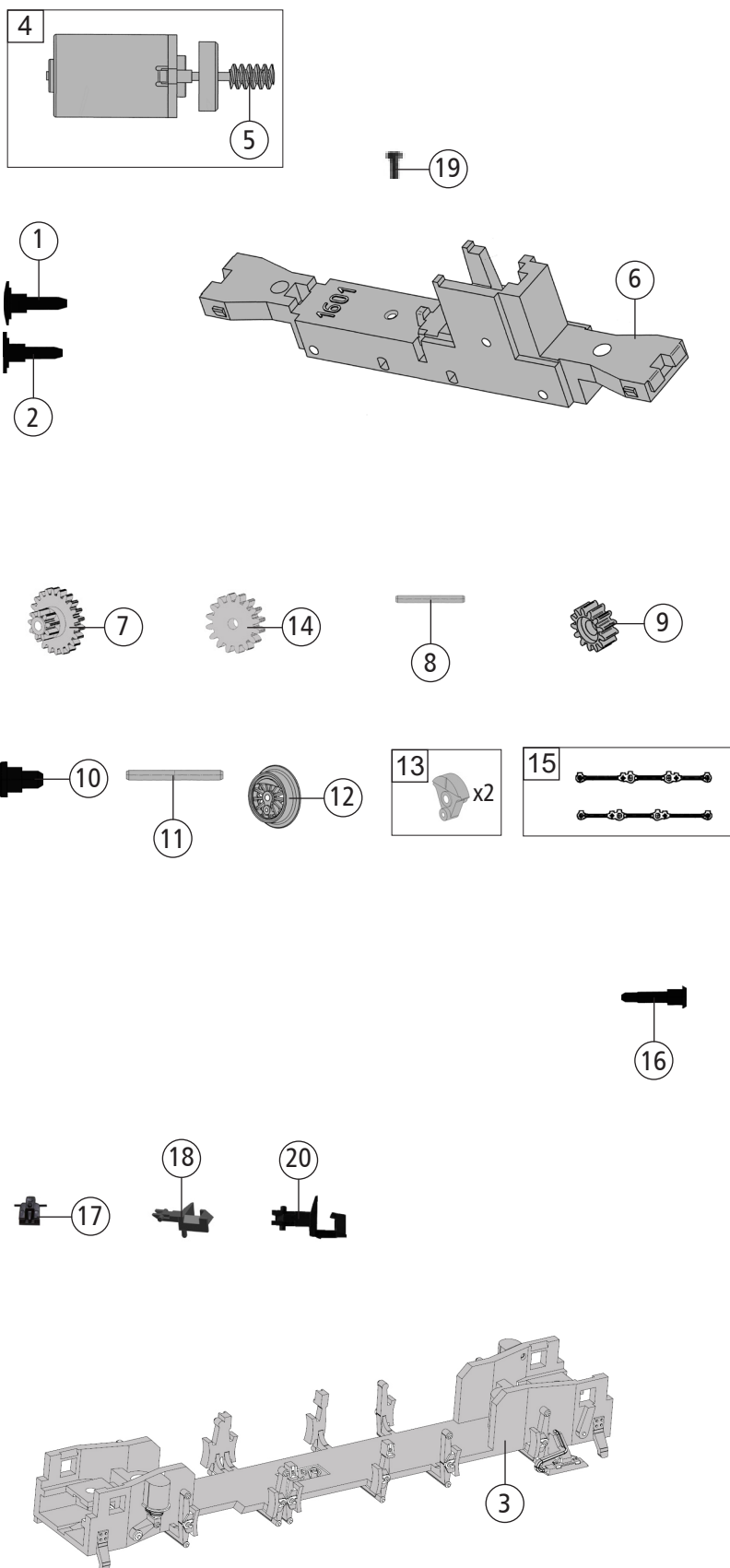


| Pos. Nr. Pos.no. | Beschreibung Description | Art.-Nr. Art.no. | Preisgruppe Price bracket |
|---------------------|---|---------------------|------------------------------|
| 722401 | DB Br 260 | = | N |
| 722481 | | = | N |
| 1 | Gehäuse kpl. Betr. Nr. 260 319-9 Body complete Loco. no. 260 319-9 | 10722401 | 35 |
| 2 | Dach Roof | 12722401 | 9 |
| 3 | TS - Lichtleiter Part set - Light conductor | 13722401 | 8 |
| 4 | TS - Fenster Part set - Window | 14722401 | 10 |
| 5 | TS - Griffe Part set - Handles | 19722401 | 7 |
| 6 | Antenne Antenna | 00197830 | 3 |
| 7 | Antenne 3,4 mm Antenna | 19787900 | 7 |
| 8 | Horn Horn | 19762820 | 3 |
| 9 | Auspuff + Verkleidung Chimney + casing | 19786010 | 12 |
| 10 | Umlaufblech Runway | 11722401 | 22 |
| 11 | TS - Griffe Part set - Handles | 19783400 | 11 |
| 12 | TS - Bühnengeländer Part set - Platform railing | 19786110 | 18 |
| 13 | Bühne lang + kurz Platform long + short | 19786210 | 15 |
| 14 | Platine vorne PCB front | 65714710 | 14 |
| 15 | Platine hinten PCB rear | 00657115 | 13 |
| 16 | Stromabnehmereinsatz Power pick-up assembly | 60722584 | 18 |
| 17 | Kühlblech Cooling plate | 62722581 | 7 |
| Digital | | | |
| 18 | Platine vorne PCB front | 00657118 | 13 |
| 19 | DCC decoder DCC decoder | 68722581 | 35 |

Änderungen in Konstruktion und Ausführung vorbehalten
We reserve the right to change the construction and specification



| Pos. Nr. Pos.no. | Beschreibung Description | Art.-Nr. Art.no. | Preisgruppe Price bracket |
|---------------------|---|---------------------|------------------------------|
| 722401 | DB Br 260 | = | N |
| 722481 | | = | N |
| 1 | Puffer gewölbt Buffer curved | 00757011 | 2 |
| 2 | Puffer flach Buffer flat | 00757012 | 2 |
| 3 | Abdeckplatte Getriebe Cover plate for gears | 43722401 | 11 |
| 4 | Motor m. Schwungm. + Schnecke Motor w. flywheel + wormgear | 50722504 | 30 |
| 5 | Schnecke Wormgear | 00567608 | 8 |
| 6 | Grundrahmen Base frame | 146577 | 12 |
| 7 | Unterstützungsrad Z=9/22 Reduction gearwheel | 00567158 | 6 |
| 8 | Achse f. Zahnrad Axle for gearwheel | 00730541 | 1 |
| 9 | Zahnrad Z=13 Gearwheel | 00567159 | 5 |
| 10 | Bundbolzen L=2,6 D=1/1,5 mm Flanged bolt | 00730578 | 3 |
| 11 | Achse D=1 L=11,8 mm Axle | 00527003 | 1 |
| 12 | Lokrad Loco wheel | 00517088 | 6 |
| 13 | TS - Blindwellenkurbel Part set - Jackshaft crank | 00517900 | 8 |
| 14 | Zahnrad Z=16 Gearwheel | 00567137 | 5 |
| 15 | TS - Kuppelstangen Part set - Coupling rod | 00427225 | 11 |
| 16 | Bolzen f. Kuppelstangen Bolt for coupling rods | 00730579 | 1 |
| 17 | Kupplungsadapter Coupling adaptor | 00387005 | 7 |
| 18 | Kupplung N Coupling | 98189 | 6 |
| 19 | Schraube M1,6x10 mm Screw | 85746 | 3 |
| 20 | Standard Steckkupplung Standard plug-in coupling | 9525 | --- |